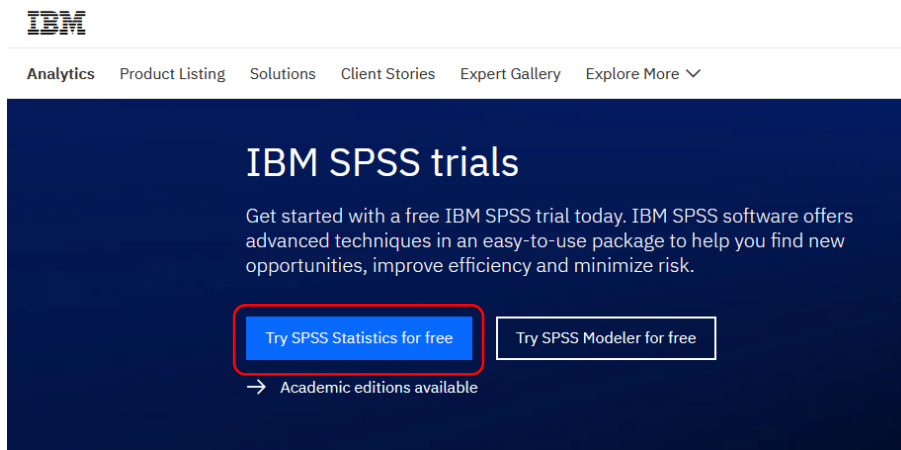


Instructions on how to download and install IBM SPSS Statistics (SPSS)

Open the web page:

<https://www.ibm.com/analytics/spss-trials>

In the window that opens, click “Try SPSS Statistics for free”:



In the new window that opens, enter the requested data:
(remember your login details, you will need them later when starting the program)

After entering all the required data, click “Create account”:

Didn't receive the email? Check your spam filter for an email from ibmacct@iam.ibm.com.

[Resend code](#)

IBM may use my contact data to keep me informed of products, services and offerings:

- by E-mail
- by telephone

You can withdraw your marketing consent at any time by submitting an [opt-out request](#). Also you may unsubscribe from receiving marketing emails by clicking the unsubscribe link in each email.

More information on our processing can be found in the [IBM Privacy Statement](#). By submitting this form, I acknowledge that I have read and understand the IBM Privacy Statement.

I accept the product [Terms and Conditions](#) of this registration form.

Create account

In the window that opens, click “Proceed”:

About your IBMid Account Privacy

This notice provides information about accessing your IBMid user account (Account). If you have previously been presented with a version of this notice, please refer to “Changes since the previous version of this notice” below for information about the new updates.

Updates to the [IBM Privacy Statement](#) since this notice was originally published provide additional information about how your personal information is processed by IBM.

- Why IBM needs your data
- How your data was obtained
- How IBM uses your data
- How IBM protects your data
- How long we keep your data
- Your rights

I acknowledge that I understand how IBM is using my Basic Personal Data and I am at least 16 years of age.

This document was last updated on 2020-03-05

Cancel

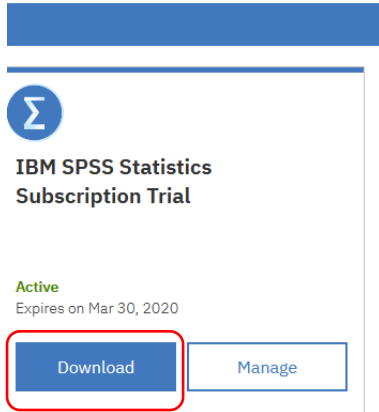
Proceed

Click "Download":

Products

Trials

1 Offering



**IBM SPSS Statistics
Subscription Trial**

Active
Expires on Mar 30, 2020

[Download](#) [Manage](#)

Depending on your computer's operating system, select the appropriate download option (Microsoft Windows 64-bit, Microsoft Windows 32-bit or Mac OS) and then click "Download". Save the .exe file to a location of your choice.

(To determine if you have a 32-bit or 64-bit Windows version you can find here: <https://support.microsoft.com/en-us/help/15056/windows-32-64-bit-faq>)

[Learn more](#)

Downloads

Minimum system requirements: 1.6 GHz CPU, 4GB RAM, 4GB storage, 1024x768 display

[Learn more](#)

IBM SPSS Statistics Subscription Trial for Microsoft Windows 64-bit

After the file has downloaded, use Windows Explorer to browse to the saved .exe file location. Right-click on the saved .exe file and select Run a...

[Show more](#)

[Download](#)

IBM SPSS Statistics Subscription Trial for Microsoft Windows 32-bit

After the file has downloaded, use Windows Explorer to browse to the saved .exe file location. Right-click on the saved .exe file and select Run a...

[Show more](#)

[Download](#)

IBM SPSS Statistics Subscription Trial for Mac OS

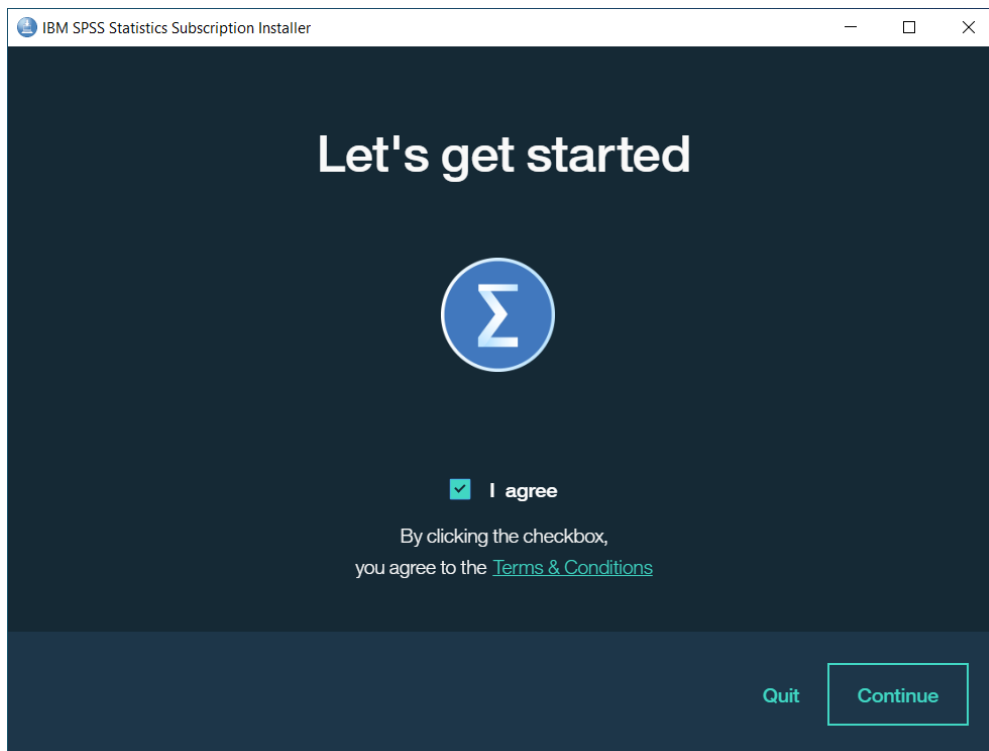
[Download](#)

SPSS installation

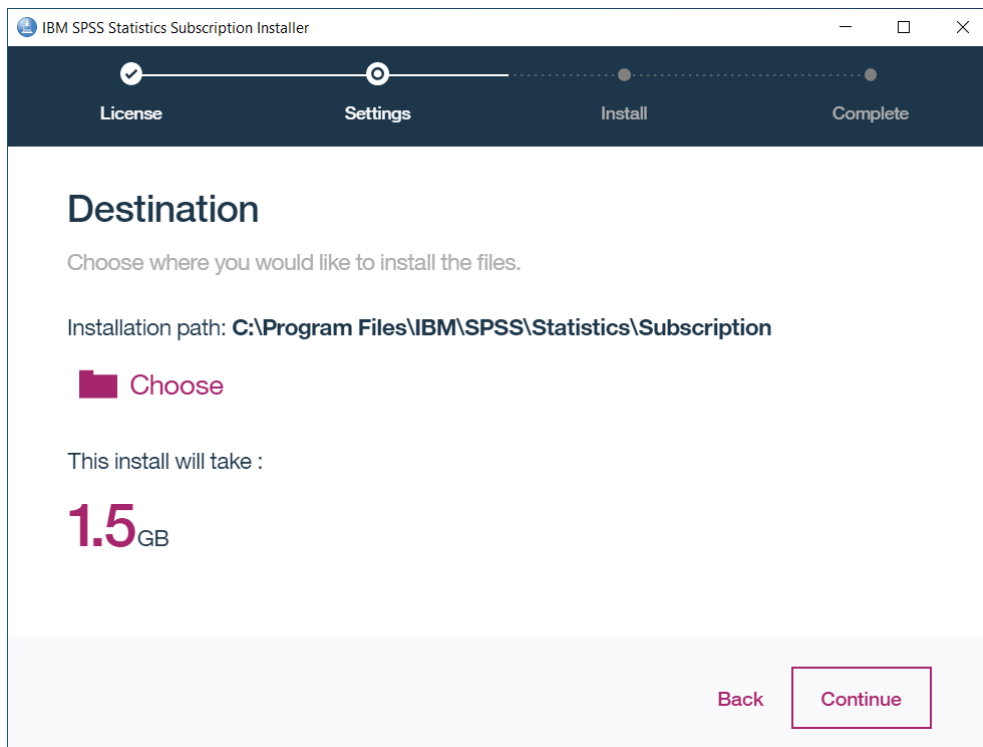
Navigate to the save file location on your computer and double-click the installer file .exe.



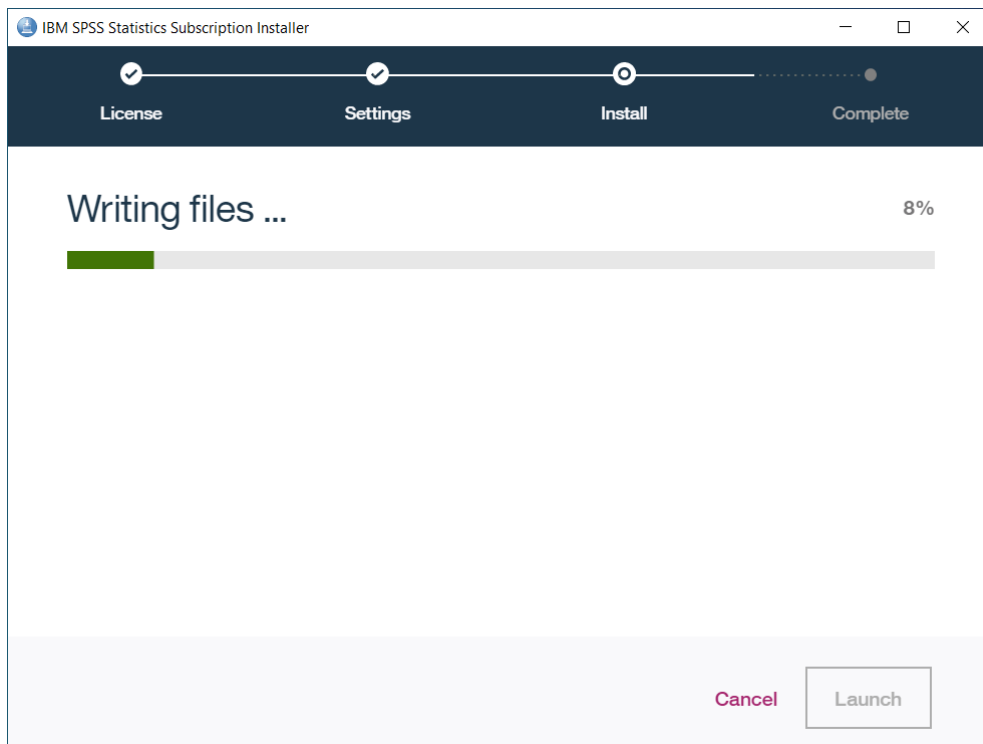
In the window that opens, select "I agree" and click "Continue":



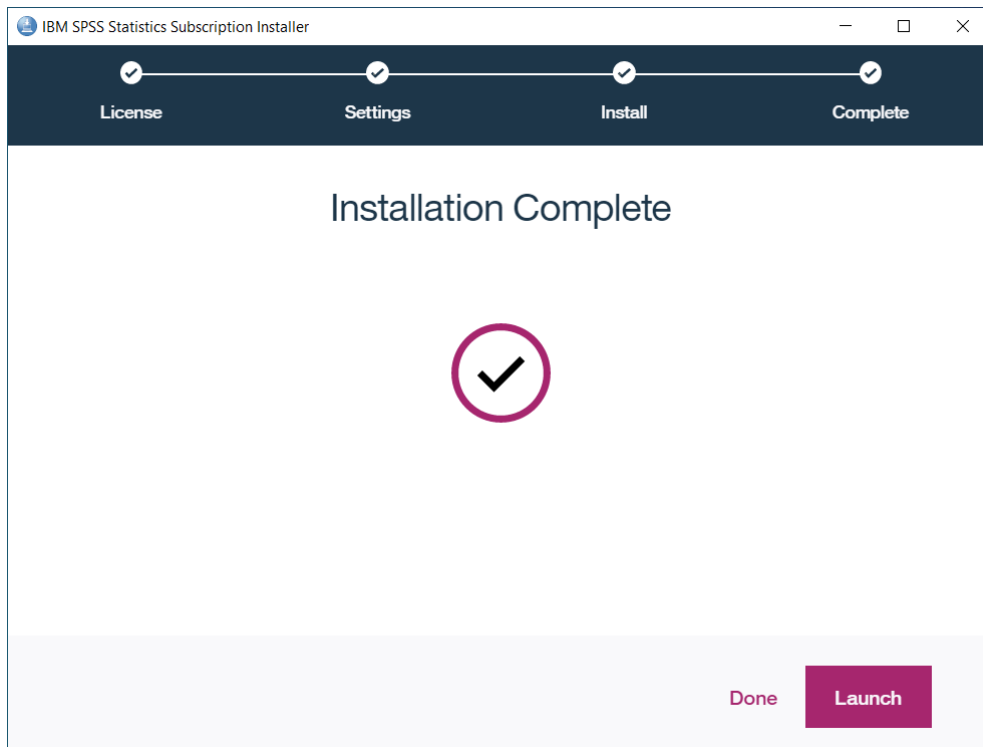
In the window that opens, you can choose where you would like to install the program on your computer. I suggest you do not change the location and click “Continue”. Before doing so, make sure that the C drive has at least 1.5 GB of free memory.



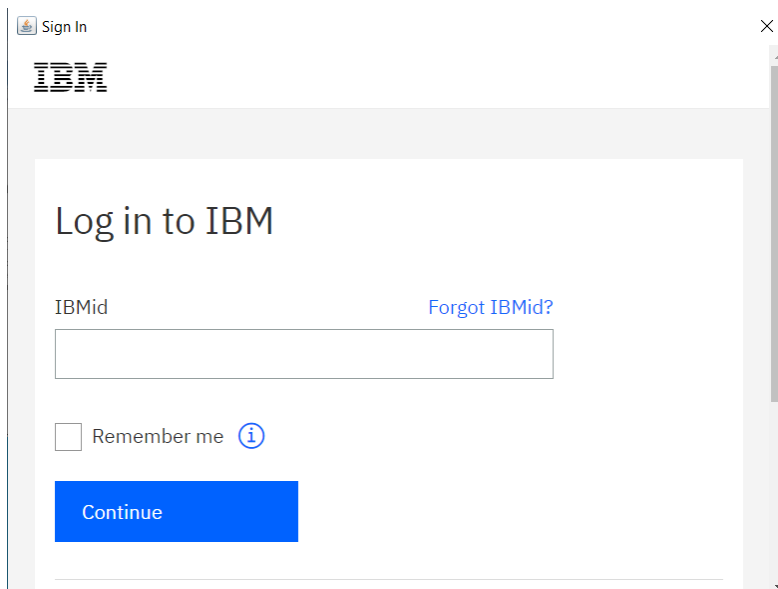
Wait until the program installation is complete:



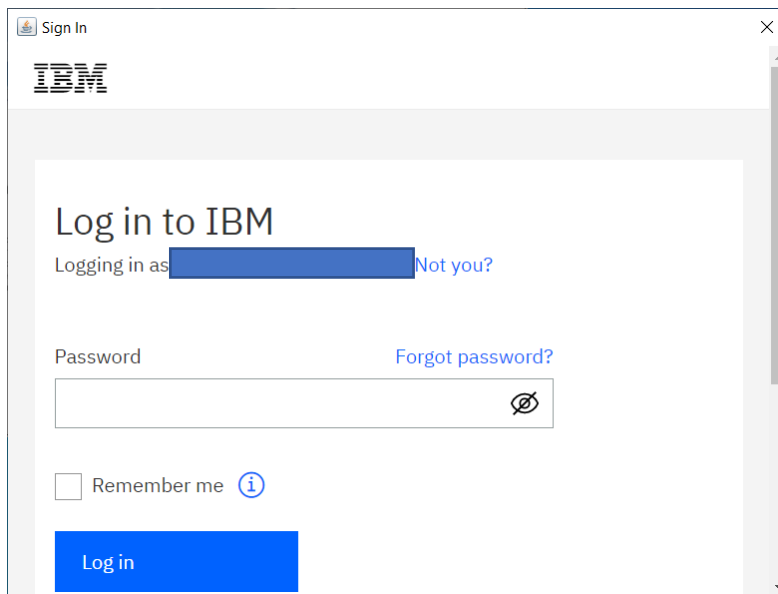
When the installation is complete, you can either close the installation window (“Done”) or launch the installed program (“Launch”).



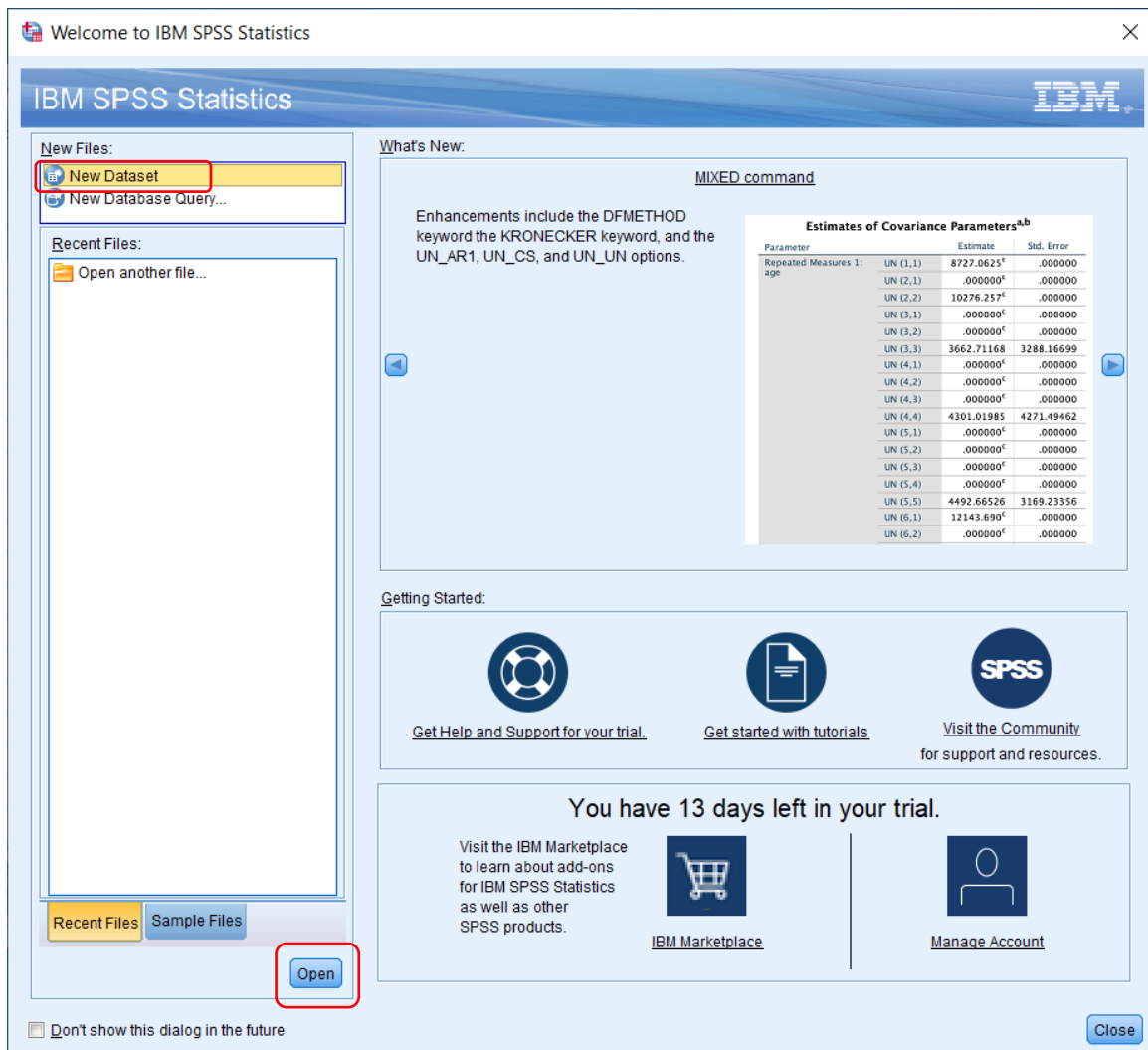
When you launch the program for the first time, you will be asked to log in with the data you provided during registration. Enter your login (this should be the email address you provided at registration) and click “Continue”:



Enter the password you created during registration and click “Log in”:



When the program opens, select “New Dataset” and click “Open”:



IBM SPSS Statistics is now ready for use:

